



Basic ASL - culture

Breanna Jones
SPAN 672



Plan for today



- Learn the ABC's of ASL!
- Why the ABC's are so important
- ASL culture of storytelling

A decorative graphic consisting of two overlapping parallelogram shapes, one light blue and one light green, pointing towards the bottom right.

Warm-up
In the Q&A, write:

- Two things you know about ASL.
- Then...
- Share them with a partner.



Who knows the ABC's?

A
B
C
D
E
F
G
H

J
K
L
M
N
O
P
Q

R
S
T
U
V
W
X
Y
Z

Can you spell your name?



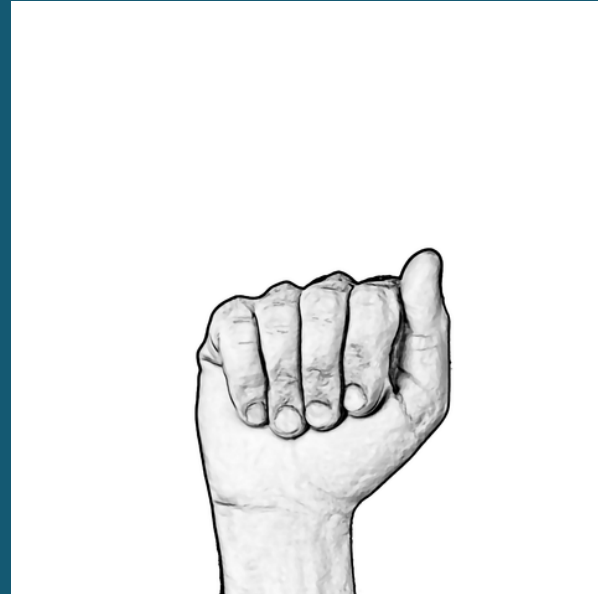
If so, can you help your partner spell their name?

If you and your partner can spell your names, try spelling this sentence!

The quick brown fox jumped over the lazy dog.

How fast can you go?

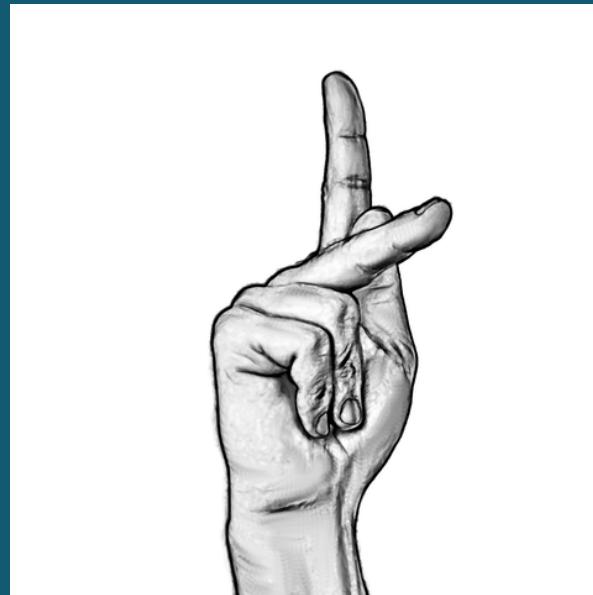
Show me with your hands, the letter
(handshape) A!



[Lifeprint](#)
[Sign language \(ASL\) alphabet by Dr. Bill](#)
[Vicar](#)



Show me with your hands, the letter
(handshape) K!



[Lifeprint](#)
[Sign language \(ASL\) alphabet by Dr. Bill](#)
[Vicar](#)



Show me with your hands, the letter
(handshape) S!



[Lifeprint](#)
[Sign language \(ASL\) alphabet by Dr. Bill](#)
[Vicar](#)



Why are the ABC's (handshapes) so important?

- Handshapes
- Classifiers
- Storytelling



Let's ~~hear~~ see a story!



While you watch:

- What handshapes does she use?
- What do you notice about her expressions?
- Think about famous storytellers in your native or second (or third or fourth). How are these stories different?
With a partner, discuss:
- How does the story telling here differ from storytellers in your first/second/third language?
- Why do you think ASL storytelling is so expressive?



Let's hear see a story!



While you watch:

- What do you notice about his expressions?
- Think about famous storytellers in your native or second (or third or fourth). How are these stories different?
With a partner, discuss:
- How does the story telling here differ from storytellers in your first/second/third language?
- Does your first/second/third language have something similar to this?



A decorative graphic on the left side of the slide, consisting of two overlapping chevron shapes pointing to the right. The top shape is a light teal color, and the bottom shape is a slightly darker teal color.

Wrap-up

In the Q&A, write:

3 things you learned

2 things you will do
differently

1 thing you are wondering